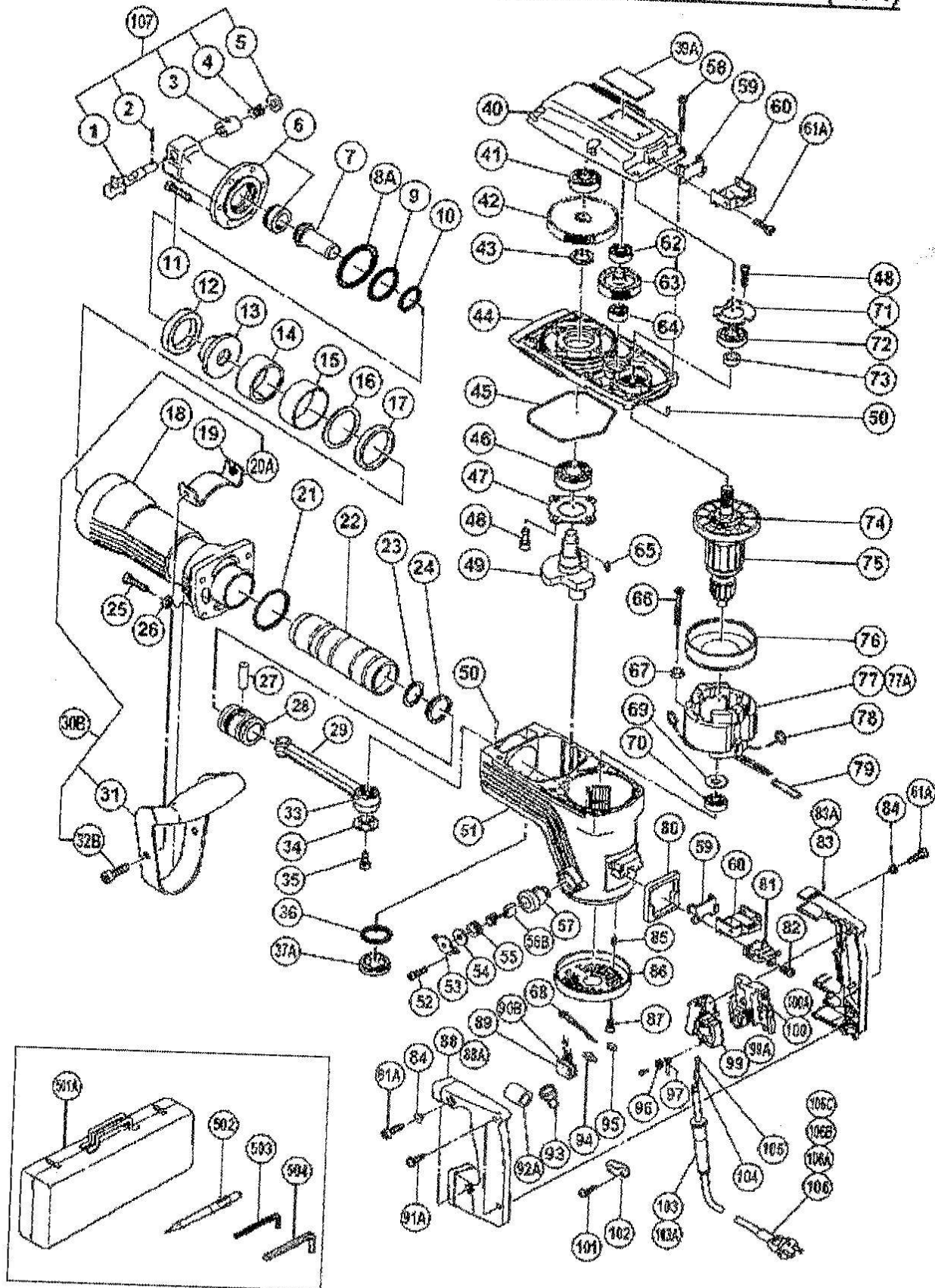


ELECTRIC TOOL PARTS LIST

HAMMER
Model H 65SB

2003 · 6 · 1

(E2-4)



PARTS

H65SB

ITEM No.	CODE No.	DESCRIPTION	No. USED	REMARKS
1	998-423	STOP LEVER	1	
2	998-426	NEEDLE ROLLER	1	
3	998-424	SPRING CASE	1	
4	956-975	LEVER SPRING	1	
5	998-425	DAMPER (B)	1	
6	998-435	FRONT COVER	1	
7	998-420	SECOND HAMMER	1	
8A	998-428	O-RING (C)	1	
9	998-427	O-RING (B)	1	
10	998-419	O-RING (E)	1	
11	306-437	NYLOCK HEX. SOCKET HD. BOLT M8X30	6	
12	998-433	DAMPER (A)	1	
13	998-418	SHANK SLEEVE	1	
14	956-963	MOUTH	1	
15	956-962	MOUTH COVER	1	
16	956-961	MOUTH WASHER	1	
17	956-960	URETHANE RING	1	
18	306-164	CYLINDER CASE (BLACK)	1	
19	944-950	U-NUT (B) M8	2	TILL 9.2001
20A	320-374	HANDLE STAY (W/NUT)	1	
21	956-996	O-RING (1AS-60)	1	
22	956-958	STRIKER	1	
23	998-414	O-RING (A)	1	
24	998-415	OIL SEAL (A)	1	
25	306-163	NYLOCK HEX. SOCKET HD. BOLT M8X35	4	
26	949-433	BOLT WASHER M8 (10 PCS.)	4	
27	944-928	PISTON PIN	1	
28	998-413	PISTON	1	
29	998-434	CONNECTING ROD ASS'Y	1	INCLUD.33
30B	306-165	SIDE HANDLE ASS'Y	1	INCLUD.20A,31,32B
31	306-166	GRIP	1	
32B	320-375	NYLOCK HEX. SOCKET HD. BOLT M8X16	2	
33	944-921	NEEDLE BEARING (NTN 8E-NK 18/20 RDO)	1	
34	956-955	CRANK WASHER	1	
35	996-364	SEAL LOCK HEX. SOCKET HD. BOLT M8X16	1	
36	980-717	O-RING (S-38)	1	
37A	990-945	OIL CAP ASS'Y	1	INCLUD.36
39A		NAME PLATE	1	
40	998-429	GEAR COVER	1	

*ALTERNATIVE PARTS

PARTS

H65SB

ITEM No.	CODE No.	DESCRIPTION	No. USED	REMARKS
41	630-2VV	BALL BEARING 6302VVCMP2L	1	
42	944-916	FINAL GEAR	1	
43	944-915	DISTANCE RING (B)	1	
44	998-412	INNER COVER	1	
45	957-143	SEAL RING (A)	1	
46	620-5DD	BALL BEARING 6205DDCMP2L	1	
47	956-949	BEARING COVER	1	
48	990-079	SEAL LOCK HEX. SOCKET HD. BOLT M5X16	7	
49	998-430	CRANK SHAFT	1	
50	944-918	PIN D5X15.8	2	
51	306-097	HOUSING ASS'Y	1	INCLUD.57,85
52	983-162	SEAL LOCK HEX. SOCKET HD. BOLT M4X12	4	
53	956-972	CAP COVER	2	
54	944-960	CAP RUBBER	2	
55	940-540	BRUSH CAP	2	
56B	999-086	CARBON BRUSH (AUTO STOP TYPE) (1 PAIR)	2	
57	956-984	BRUSH HOLDER	2	
58	986-940	SEAL LOCK HEX. SOCKET HD. BOLT M6X45	6	
59	980-750	GUIDE PLATE	2	
60	980-727	HANDLE RUBBER	2	
61A	990-079	SEAL LOCK HEX. SOCKET HD. BOLT M5X16	6	
62	620-1VV	BALL BEARING 6201VVCMP2L	1	
63	956-948	COUNTER GEAR	1	
64	600-1VV	BALL BEARING 6001VVCMP2L	1	
65	956-850	WOODRUFF KEY 4X16	2	
66	960-251	HEX. HD. TAPPING SCREW D5X65	2	
67	956-764	SPECIAL WASHER	2	
* 68	994-190	INTERNAL WIRE	1	FOR ITA,FRG,FRA,BEL,HOL,GBR,AUS,NZL,FIN, AUT,NOR,SWE,DEN,ESP,SAF,SUI
69	944-954	BEARING WASHER	1	
70	620-1DD	BALL BEARING 6201DDCMP2L	1	
71	944-911	BEARING COVER (A)	1	
72	620-3DD	BALL BEARING 6203DDCMP2L	1	
73	944-907	DISTANCE RING (A)	1	
74	996-370	FAN	1	
* 75	360-286C	ARMATURE ASS'Y 110V-115V	1	INCLUD.74
* 75	360-286E	ARMATURE ASS'Y 220V-230V	1	INCLUD.74
* 75	360-286F	ARMATURE ASS'Y 240V	1	INCLUD.74
76	306-098	FAN GUIDE	1	

*ALTERNATIVE PARTS

PARTS

H65SB

ITEM No.	CODE No.	DESCRIPTION	No. USED	REMARKS
* 77	340-259C	STATOR ASS'Y 110V-115V	1	INCLUD.78,79
* 77	340-259E	STATOR ASS'Y 220V-230V	1	INCLUD.78,79
* 77	340-259H	STATOR ASS'Y 240V	1	INCLUD.78,79 TILL 3.1998 FOR AUS
* 77A	340-259F	STATOR ASS'Y 240V	1	INCLUD.78,79 FOR KUW,SINCE 4.1998 FOR
				AUS
78	945-932	BRUSH TERMINAL	2	
79		TUBE (D7XTO.25X20)	1	
80	980-751	HANDLE PACKING	1	
81	985-469	INTERNAL WIRE HOLDER	1	
82	990-079	SEAL LOCK HEX. SOCKET HD. BOLT M5X16	2	
* 83	983-272	HANDLE (A)	1	TILL 3.1998 FOR AUS
* 83A	306-168	HANDLE (A)	1	
84	991-711	DISTANCE PIECE (B)	4	
85	938-477	HEX. SOCKET SET SCREW M5X8	2	
86	306-099	TAIL COVER	1	
87	991-690	SEAL LOCK HEX. SOCKET HD. BOLT M5X12	2	
* 88	983-273	HANDLE (B)	1	TILL 3.1998 FOR AUS
* 88A	306-169	HANDLE (B)	1	
* 89	930-153	SUPPORT (B)	1	FOR NOISE SUPPRESSOR
* 90B	994-273	NOISE SUPPRESSOR	1	FOR ITA,FRG,FRA,BEL,HOL,GBR,AUS,NZL,FIN,
				AUT,NOR,SWE,DEN,ESP,SAF,SUI
91A	307-028	TAPPING SCREW (W/FLANGE) D4X25 (BLACK)	1	
92A	319-134	VINYL TUBE	1	
* 93	959-140	CONNECTOR 50091 (10 PCS.)	1	FOR ITA,FRG,FRA,BEL,HOL,GBR,AUS,NZL,FIN,
				AUT,NOR,SWE,DEN,ESP,SAF,SUI
* 94	959-141	CONNECTOR 50092 (10 PCS.)	1	
* 95	938-307	PILLAR TERMINAL	1	
* 96	949-423	WASHER M4 (10 PCS.)	1	
* 97	306-681	INTERNAL WIRE	1	110V-115V
* 97	981-974	INTERNAL WIRE	1	220V-240V
* 99	981-533Z	SWITCH (2P PILLAR TYPE) W/O LOCK	1	TILL 3.1998 FOR AUS
* 99A	306-143	SWITCH (B) (1P SCREW TYPE) W/LOCK	1	
* 100	981-986Z	SUPPORT (A)	1	TILL 3.1998 FOR AUS
* 100	963-243	SUPPORT	1	FOR SUI
* 100A	990-082	SUPPORT (E)	1	
101	984-750	TAPPING SCREW (W/FLANGE) D4X16	2	
* 102	960-266	CORD CLIP	1	
* 102	981-987Z	CORD CLIP	1	FOR SUI
* 103	940-778	CORD ARMOR D10.7	1	

*ALTERNATIVE PARTS

PARTS

H65SB

ITEM No.	CODE No.	DESCRIPTION	No. USED	REMARKS
* 103A	958-049	CORD ARMOR D8.2	1	
104	996-438	VINYL TUBE (A) (I.D.7XTO.5X50)	2	
* 105	980-063	TERMINAL	1	FOR CORD
* 105	992-810	TERMINAL	1	FOR CORD
* 105	930-804	TERMINAL M4.0 (10 PCS.)	1	FOR CORD
* 106	500-206Z	CORD	1	(CORD ARMOR D10.7)
* 106	500-390Z	CORD	1	(CORD ARMOR D10.7) FOR ITA,FRG,FRA,ESP, HOL,DEN,FIN,SWE,AUT,NOR
* 106	500-235Z	CORD	1	(CORD ARMOR D8.2) FOR INA
* 106	500-394Z	CORD	1	(CORD ARMOR D10.7) FOR SYR
* 106	500-391Z	CORD	1	(CORD ARMOR D10.7) FOR SUI
* 106	500-424Z	CORD	1	(CORD ARMOR D8.2) FOR KUW
* 106	500-408Z	CORD	1	(CORD ARMOR D10.7) FOR AUS,NZL
* 106A	500-466Z	CORD	1	(CORD ARMOR D10.7) FOR GBR (110V)
* 106B	500-450Z	CORD	1	(CORD ARMOR D10.7) FOR GBR (230V)
* 106C	500-247Z	CORD	1	(CORD ARMOR D10.7) FOR SAF
107	318-656	STOP LEVER ASS'Y	1	INCLUD.1-5

STANDARD ACCESSORIES

ITEM No.	CODE No.	DESCRIPTION	No. USED	REMARKS
501A	314-179	CASE (STEEL)	1	
502	944-961	BULL POINT 410MM	1	
503	943-277	HEX. BAR WRENCH 3MM	1	
504	872-422	HEX. BAR WRENCH 6MM	1	
601	944-962	COLD CHISEL 410MM (HEX. SHANK TYPE)	1	
602	944-964	CUTTER W75X45L (ROUND SHANK TYPE)	1	
603A	957-154	SCOOP 380L (ROUND SHANK TYPE)	1	
604	944-966	RAMMER SHANK (HAMMER)	1	
605	944-965	RAMMER 200MM	1	
606	980-927	GREASE FOR HAMMER.HAMMER DRILL (500G)	1	
607	981-840	GREASE (A) FOR HAMMER.HAMMER DRILL (30G)	1	
608	306-441	SERVICE KIT (H 65SB)	1	INCLUD.609-620
609	998-427	O-RING (B)	1	
610	998-428	O-RING (C)	1	
611	306-437	NYLOCK HEX. SOCKET HD. BOLT M8X30	6	
612	998-419	O-RING (E)	1	
613	956-960	URETHANE RING	1	
614	956-996	O-RING (1AS-60)	1	

*ALTERNATIVE PARTS

STANDARD ACCESSORIES

H65SB

ITEM No.	CODE No.	DESCRIPTION	No. USED	REMARKS
615	998-414	O-RING (A)	1	
616	998-415	OIL SEAL (A)	1	
617	957-143	SEAL RING (A)	1	
619	981-840	GREASE (A) FOR HAMMER.HAMMER DRILL (30G)3		
620	930-035	GREASE (SEP-3A) (100G)	1	